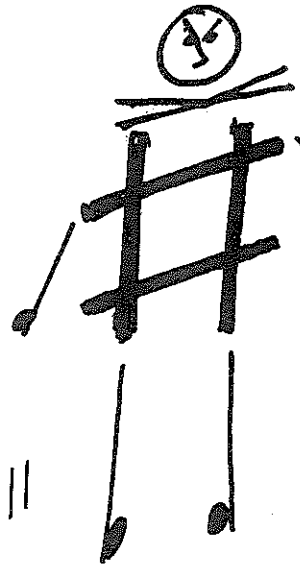
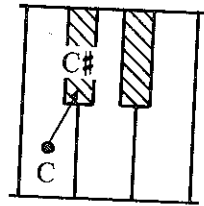


An ACCIDENTAL is a sign that is put BEFORE a note to change its pitch by making it higher or lower always drawn on exactly the same line or space as the note that is being changed.

This is a SHARP. # Drawing a sharp in front of a note RAISES it a semitone.



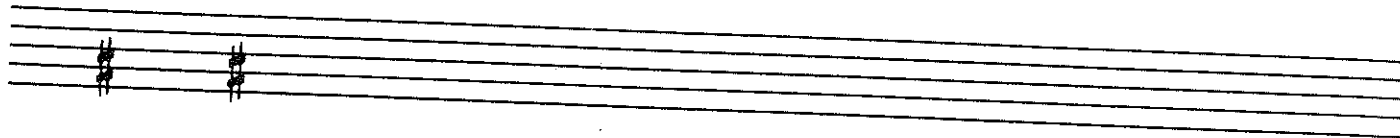
Notice that we say "C sharp" but it is written "sharp C".

This is how to draw a sharp.

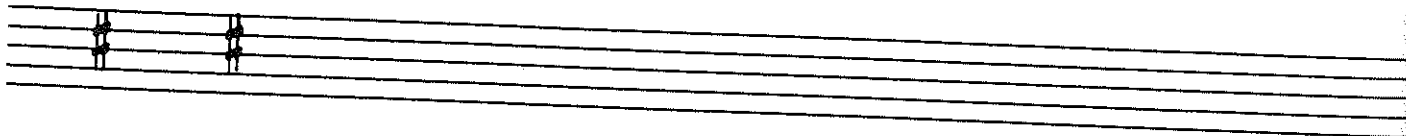
1. Draw two straight lines down with the second one a little higher than the first:
2. Cross them with two slanted lines like this: #

EXERCISES

Draw ten sharps on the second line of this staff.



2. Draw ten sharps in the third space of this staff.



3. Draw a sharp in front of each of these notes remembering to put it on exactly the same line or space as the note. Then name each note.

