




## TIME VALUES.


Sounds in music have different LENGTHS or DURATIONS as well as different pitches.


In writing music different kinds of notes are used to show how long the sound is to last.



A WHOLE NOTE is used for the longest sound. This is a white note which has no stem. 

If you want a sound to last only half as long as a whole note you use a HALF NOTE. This is a white note with stem. 

If you want a sound to last only half as long as the half note you use a QUARTER NOTE. This is a black note with a stem. 

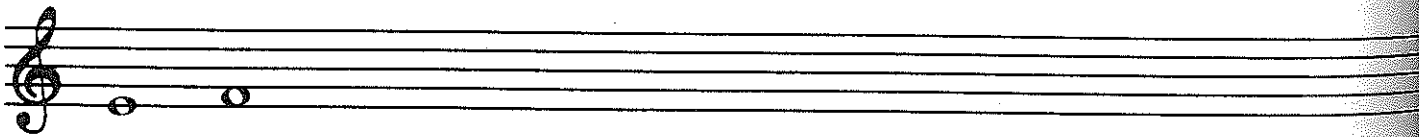
If you want a short sound lasting only half as long as a quarter note you use an EIGHTH NOTE. This is a black note with a stem and a flag. Notice that the flag always curves to the right whether the stem is up or down. 

Sometimes eighth notes are written in groups, with their stems joined by a line which is called a BEAM. 

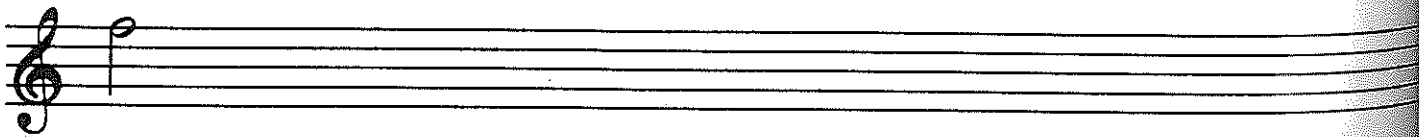
The shortest note that you will probably use at the present time is only half as long as the eighth note. It is called a SIXTEENTH NOTE. It is a black note with a stem and two flags.  Sixteenth notes also come in groups with their stems joined by two beams. 

### EXERCISES

1. Write a whole note on each line and space.



2. Write 10 half notes on line 5.



3. Write 10 half notes on line 2.

